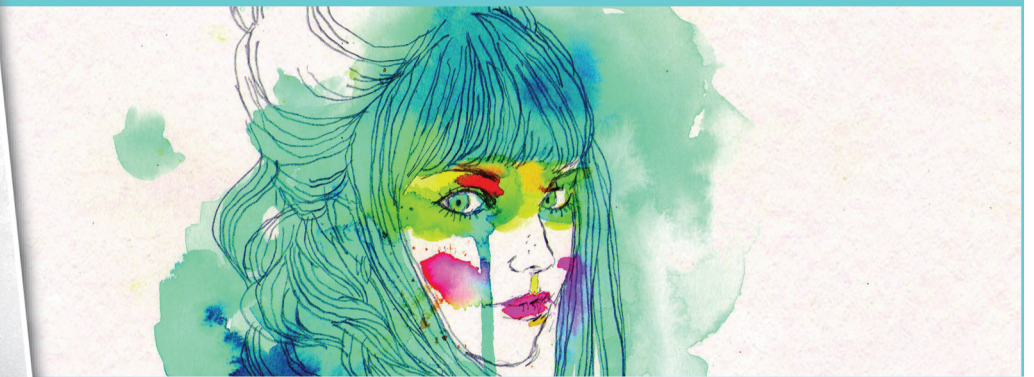


Signature Collection

## CONRAD ROSET

"Escoda brushes offer me a wide range of expressive possibilities.  
ÚLTIMO and BARROCO series are my basics."



(Terrassa, Barcelona - Spain)

From a young age and from an academic training he decides to fix the starting point of his career in the expressionism field. It is from there that he explores several ways to deal with his major theme: the female sensuality. An undeniable sensuality that he achieves through a brave use of color. His brush traces, but it also stains, drenches, drips... Conrad Roset uses the brush like a juggler and he sets off fireworks on the spectator's look.

Conrad Roset uses different brushes, but in his set we have the essential ones for any artist who wants to introduce himself to watercolor. ÚLTIMO (synthetic) has an extraordinary softness and almost the same liquid retention as squirrel. BARROCO (synthetic) is one of the most popular references of watercolor. Similar to White Toray, even with a bit more spring.

Series # 8610-1

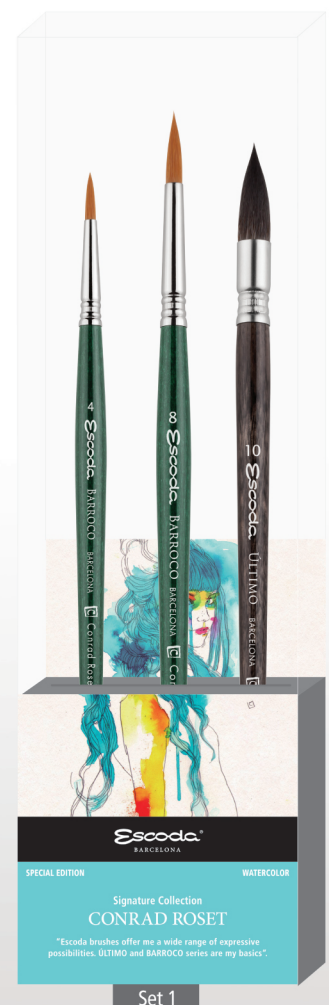
Set1 for WATERCOLOR consisting of:

**ÚLTIMO - SYNTHETIC HAIR**

**1530** ÚLTIMO | Round | #10

**BARROCO - SYNTHETIC HAIR**

**1410** BARROCO | Round | #4, 8



Set 1